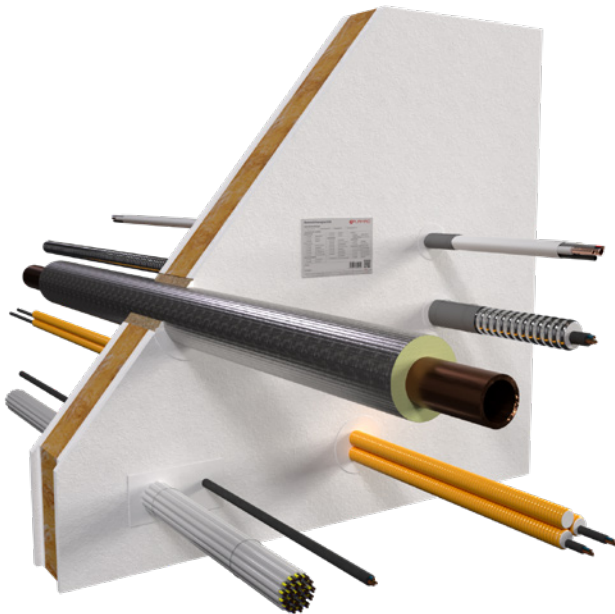


System Flammotect Easy Seal

Easy-to-install sealing system made of mineral wool and ablative coating for electrical installations and pipes



Fire resistance class

max. EI 120 in acc. with EN 13501-2 as per ETA-22/0052

Fields of application

- plasterboard wall, solid wall, solid floor

Services

		max. diameter
	Cables	≤ 21
	Cable bundles	≤ 100 / ≤ 21
	single	≤ 32
	bundled	≤ 100 / ≤ 32
	single	≥ 14 – ≤ 50
	Coaxial cables and wave guides	≤ 51.1
	Non-combustible pipes	≤ 219.1 (steel) ≤ 88.9 (copper)
	HVAC split line combinations	✓

All specifications in mm

System data

Certificate of usability		ETA-22/0052
Thickness of building element	Plasterboard wall	≥ 100
	Solid wall	≥ 100
	Solid floor	≥ 150
Thickness of seal	Plasterboard wall	≥ 100
	Solid wall	≥ 100
	Solid floor	≥ 150
Sealing size	Plasterboard wall	≤ 500 × 200 / Ø ≤ 350
	Solid wall	≤ 500 × 200 / Ø ≤ 350
	Solid floor	≤ 350 × 150 / Ø ≤ 160

All specifications in mm

System Flammotect Easy Seal

Products



**FLAMMOTECT-A
Coating**

5 kg pail – Art. no. 01155132
12.5 kg pail – Art. no. 01155131



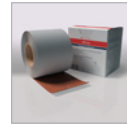
**FLAMMOTECT-A
Solid emulsion**

5 kg pail – Art. no. 01155121
12.5 kg pail – Art. no. 01155136



**FLAMMOTECT-A
Filler**

5 kg pail – Art. no. 01155135
12,5 kg pail – Art. no. 01155134
310 ml cartridge – Art. no. 01155115
600 ml flow pack – Art. no. 01155153



**NBR-plus
Fire protection wrap**

Roll, 5 m × 125 mm
(separable into 2 × 62.5 mm)
– Art. no. 0760150133
Roll, 10 m × 125 mm
(separable into 2 × 62.5 mm)
– Art. no. 01261941



Mineral wool A1

K Reaction to fire class in acc. with
EN 13501-1: A1
Melting point ≥ 1000 °C
10 kg bag – Art. no. 01183000



Label

1 piece – Art. no. 14003

Initial supports

	Wall	Floor
Non-combustible pipes	500	
Cables, cable bundles	250	
Coaxial cables and wave guides		
Electrical installation conduits		
HVAC split line combinations		
All specifications in mm		

Reduced spacing distances

For particularly easy installation we recommend spacing distances of at least 100 mm between services and to the aperture opening.

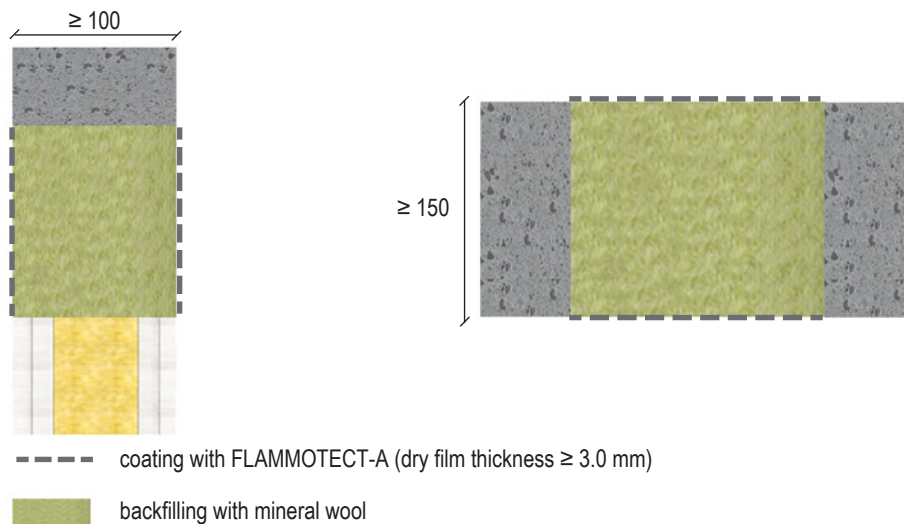
Cables, cable bundles, cable trays	to each other	0
	to aperture opening	0
	to non-combustible pipes	0
Non-combustible pipes	to each other	0
HVAC split line combinations	to each other	50
All other services	to aperture opening	25
All specifications in mm		

All other spacing distances ≥ 100 mm. Consult the installation instructions for a complete list of all spacing distances.
All specifications refer to distances between the respective insulations and additional measures if applicable.

System Flammotect Easy Seal

Design

Wall/floor



Design variants (fire resistance class EI 90)

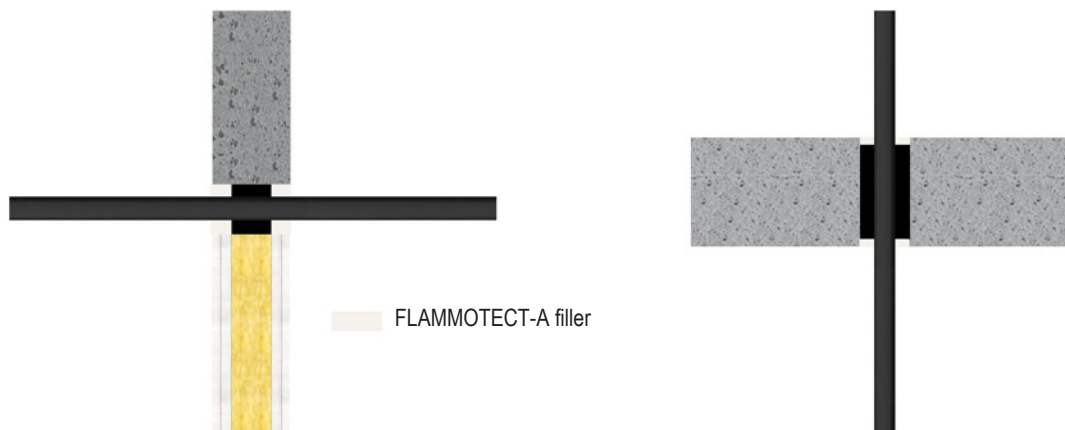
Services	Dimensions	Fire protection measures	
		Wall	Floor
Cables			
Cables	$\varnothing \leq 21$ mm	no further protection measures necessary	
Cable bundles	$\varnothing \leq 100/21$ mm		
Coaxial cables and wave guides			
RADIAFLEX RFS	$\varnothing \leq 48.2$ mm	FLAMMOTECT-A Fire protection coating 100 mm \times 1 mm on both sides	-
CELLFLEX RFS	$\varnothing \leq 50.3$ mm		
HELIAX CommScope	$\varnothing \leq 51.1$ mm		
Electrical installation conduits			
Conduits made of plastic, single	$\varnothing \leq 32$ mm with/without cables	NBR-plus fire protection wrap Width 62.5 mm, 2 \times 1 layer	NBR-plus fire protection wrap Width 125 mm, 1 \times 1 layer
Conduits made of plastic bundled	$\varnothing \leq 100$ mm, Conduit $\varnothing \leq 32$ mm with/without cables	NBR-plus fire protection wrap Width 62.5 mm, 2 \times 2 layers	NBR-plus fire protection wrap Width 125 mm, 1 \times 2 layer
Conduits made of steel, single	$\varnothing \leq 32$ mm with/without cables	Lamella mat $\geq 250 \times 30$ mm on both sides (LS/LI)	
Non-combustible pipes with mineral fibre insulation (LS/LI/CS/CI) Bulk density ≥ 35 kg/m ³ , melting point ≥ 1000 °C, class min. A2			
Copper, steel, stainless steel, cast iron	$\varnothing \leq 42$ mm	Lamella mat $\geq 200 \times 30$ –100 mm on both sides	Lamella mat $\geq 425 \times 30$ –100 mm on both sides
	$\varnothing \leq 60$ mm		Lamella mat $\geq 675 \times 30$ –100 mm on both sides
	$\varnothing \leq 88,9$ mm		
Steel, stainless steel, cast iron	$\varnothing \leq 42$ mm	Lamella mat $\geq 200 \times 30$ –100 mm on both sides	Lamella mat $\geq 125 \times 30$ –100 mm on both sides
	$\varnothing \leq 114.3$ mm		Lamella mat $\geq 425 \times 30$ –100 mm on both sides
	$\varnothing \leq 219.1$ mm		Lamella mat $\geq 1175 \times 30$ –100 mm on both sides

System Flammotect Easy Seal

Services	Dimensions	Fire protection measures	
		Wall	Floor
Non-combustible pipes with FEF insulation in acc. with EN 14304 (CS)			
Copper, steel, stainless steel, cast iron	Ø ≤ 42 mm, insulation thickness 10–38 mm	NBR-plus fire protection wrap width 62.5 mm, 2 × 2 layers	NBR-plus fire protection wrap width 125 mm, 1 × 2 layers
	Ø ≤ 88.9 mm, insulation thickness 19–38 mm	NBR-plus fire protection wrap width 62.5 mm, 2 × 2 layers	NBR-plus fire protection wrap width 125 mm, 1 × 2 layers
Steel, stainless steel, cast iron	Ø ≤ 159 mm, insulation thickness 25–38 mm	NBR-plus fire protection wrap width 62.5 mm, 2 × 2 layers + protective insulation FEF 250 × 19 mm	NBR-plus fire protection wrap width 125 mm, 1 × 2 layers + protective insulation FEF 250 × 25 mm
	Ø ≤ 219.1 mm, insulation thickness 25–38 mm	NBR-plus fire protection wrap width 62.5 mm, 2 × 2 layers + protective insulation FEF 600 × 38 mm	NBR-plus fire protection wrap width 125 mm, 1 × 2 layers + protective insulation FEF 250 × 38 mm
HVAC split line combinations			
Copper pipes (2 × Ø 18/18 mm) pre-insulated with PEF (9 mm) + 1 pipe PVC (Ø 25 mm) + 3 cables (Ø ≤ 14 mm)		NBR-plus fire protection wrap width 62.5 mm, 2 × 2 layers	NBR-plus fire protection wrap Width 125 mm, 1 × 2 layers

Variant without backfilling

Wall/floor



Services	Dimensions	Fire protection measures	
		Wand	Decke
Cables	Ø ≤ 21 mm	FLAMMOTECT-A filler depth ≥ 25 mm (EI 90)	FLAMMOTECT-A filler depth ≥ 3 mm (EI 90)